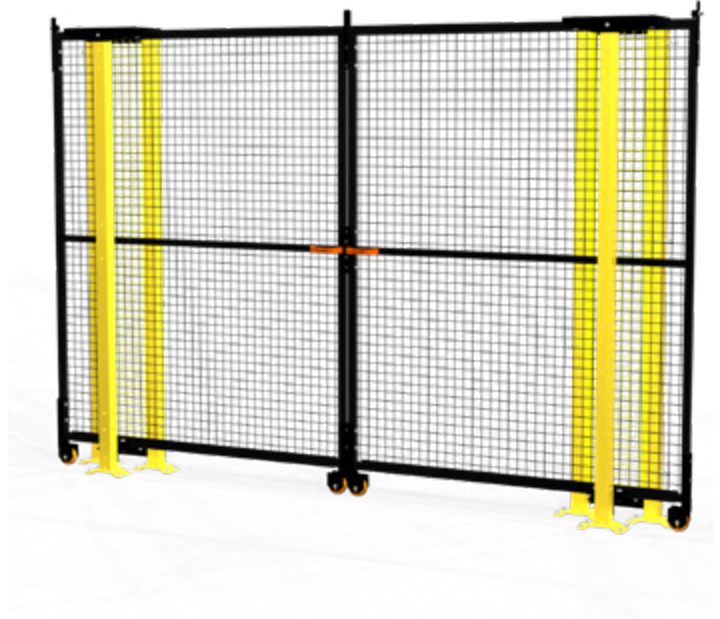


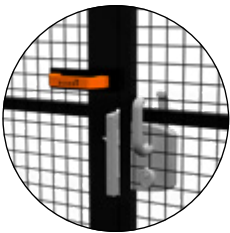
SLIDING DOOR

ROLLER BEARINGS AND WHEELS DOUBLE OPENING

The double opening roller bearings and wheels sliding door, featuring ogives which get the door to slide, can be built using any of Access framed panels. The door can be ordered as Door in a Box to be assembled on-site. Accessories and posts for assembly are supplied whereas the door panels need to be purchased separately in T30 version. All doors are provided with floor fixing plugs and captive bolts as per UNI EN ISO14120.



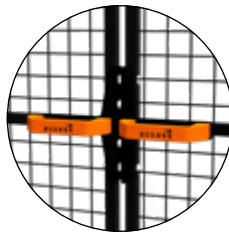
LOCKS



GAMMA

High quality lock with aluminum housing and stainless steel mechanism. It is supplied with a set of 2 anodized aluminum handles. Key lock is available upon request.

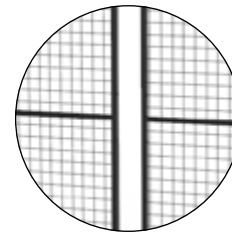
COMPATIBILITY: DEDICATED PANELS IN 30mm TUBULAR



MAGNETIC

Magnetic locking system

COMPATIBILITY: ALL FRAMED PANELS



NEUTRAL

Lock-free system for optional fitting of accessories such as a safety push bar or safety electronic locks.

COMPATIBILITY: ALL FRAMED PANELS

COMPATIBILITY

Doors are compatible with guard systems built with framed panels and META or VITERIA posts

COLOURS (RAL)

All doors undergo epoxy coating process.

9005

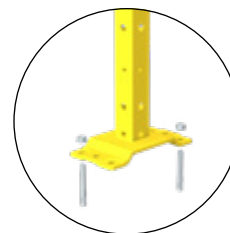
1018

7035

Other colours upon request.

BASE, TUBULAR AND FLOOR FITTING

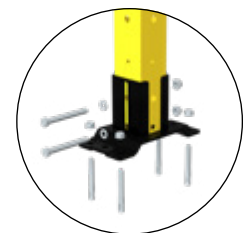
WELDED BASE



60x60 4 M8 galvanized steel mechanic plugs

PLATE SIZE: 192x100mm

ADJUSTABLE BASE



60x60 4 M8 galvanized steel mechanic plugs

Height setting 25mm

PLATE SIZE: 192x100mm

CODE STRUCTURE

VFDA. S C ^①**1B** ^②**0** ^③**A** ^④**R** ^⑤**3** ^⑥**.01** ^⑦**2020**

①	OPENING
1B	Double opening

②	LOCK
G	Gamma
M	Magnetic
0	Neutral housing

③	TUBULAR SECTION AND POST BASE
C	60x60 post with adjustable base
D	60x60 post with welded base

④	PANEL COMPATIBILITY
R	Mesh panel
C	Closed panel
0	No need to identify

⑤	FRAME (mm)
3	30x30

⑥	OPENING WIDTH
01	From 2000 to 2200mm
02	From 2205 to 2400mm
03	From 2405 to 2800mm
04	From 2805 to 3000mm
05	From 3005 to 3200mm
06	From 3205 to 3600mm

⑦	HEIGHT (mm)
1080 1620 2020 2320 2520	