

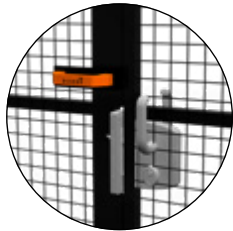
SLIDING DOOR

UPPER BINARY DOUBLE OPENING

The upper binary double opening sliding door, featuring an extra-strong aluminum rail fitted to the posts with special quills, can be built using any of Access framed panels. This door can be pre-assembled in the factory or ordered as Door in a Box. Accessories and posts for assembly are supplied whereas the door panels need to be purchased separately. All doors are provided with floor fixing plugs and captive bolts as per UNI EN ISO14120.



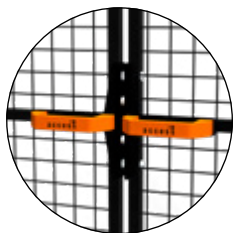
LOCKS



GAMMA

High quality lock with aluminum housing and stainless steel mechanism. It is supplied with a set of 2 anodized aluminum handles. Key lock is available upon request.

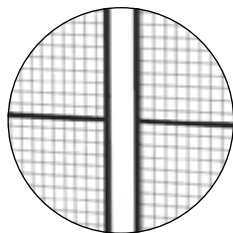
COMPATIBILITY: DEDICATED PANELS IN 30mm TUBULAR



MAGNETIC

Magnetic locking system

COMPATIBILITY: ALL FRAMED PANELS



NEUTRAL

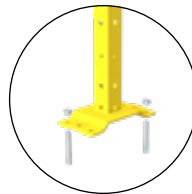
Lock-free system for optional fitting of accessories such as a safety push bar or safety electronic locks.

COMPATIBILITY: ALL FRAMED PANELS

BASE, TUBULAR AND FLOOR FITTING

WELDED BASE

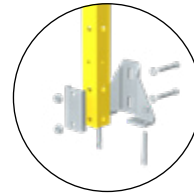
ADJUSTABLE BASE



40x40 2 M8 galvanneal steel mechanic plugs

60x60 4 M8 galvanneal steel mechanic plugs

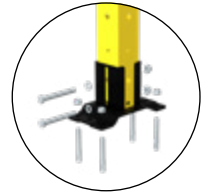
PLATE SIZE: 192x100mm



40x40 2 M8 galvanneal steel mechanic plugs

Height setting 18mm

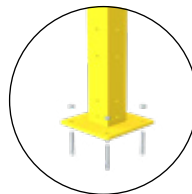
PLATE SIZE: 35x155mm



60x60 4 M8 galvanneal steel mechanic plugs

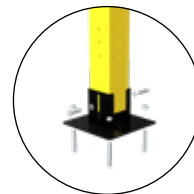
Height setting 25mm

PLATE SIZE: 192x100mm



80x80 4 M8 galvanneal steel mechanic plugs

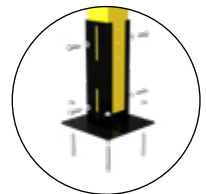
PLATE SIZE: 200x200mm



80x80 4 M8 galvanneal steel mechanic plugs

Height setting 25mm

PLATE SIZE: 200x200mm



80x80 4 M8 galvanneal steel mechanic plugs

Height setting 40mm

PLATE SIZE: 200x200mm

COMPATIBILITY

Doors are compatible with guard systems built with framed panels and META or VITERIA posts

COLOURS (RAL)

All doors undergo epoxy coating process.



9005



1018



7035

Other colours upon request.

CODE STRUCTURE

VFDA. S S **1B** **0** **A** **R** **2** **.01** **2020**

① OPENING

1B	Double opening
-----------	----------------

② LOCK

G	Gamma
M	Magnetic
0	Neutral housing

③ TUBULAR SECTION AND POST BASE

A	40x40 post with adjustable base
B	40x40 post with welded base
C	60x60 post with adjustable base
D	60x60 post with welded base
E	80x80 post with high adjustable base
F	80x80 post with low adjustable base
G	80x80 post with welded base

④ PANEL COMPATIBILITY

R	Mesh panel
C	Closed panel
0	No need to identify

⑤ FRAME (mm)

2	20x20
3	30x30

⑥ OPENING WIDTH

01	From 1300 to 1500mm
02	From 1505 to 1900mm
03	From 1905 to 2300mm
04	From 2305 to 2900mm
05	From 2905 to 3100mm
06	From 3105 to 3500mm
07	From 3555 to 3900mm

⑦ HEIGHT (mm)

2020 2320 2520
