

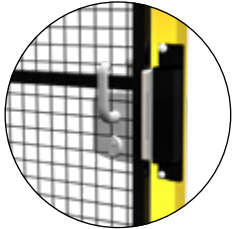
SLIDING DOOR

UPPER BINARY SINGLE OPENING

The upper binary single opening sliding door, featuring an extra-strong aluminum rail fitted to the posts with special quills can be built using any of Access framed panels. This door can be pre-assembled in the factory or ordered as Door in a Box. Accessories and posts for assembly are supplied whereas the door panels need to be purchased separately. All doors are provided with floor fixing plugs and captive bolts as per UNI EN ISO14120



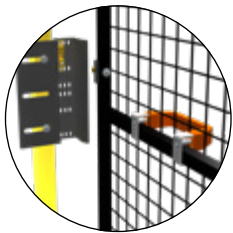
LOCKS



GAMMA

High quality lock with aluminum housing and stainless steel mechanism. It is supplied with a set of 2 anodized aluminum handles. Key lock is available upon request.

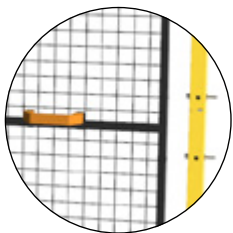
COMPATIBILITY: DEDICATED PANELS IN 30mm TUBULAR



LATCH

Brass mechanic groove and tongue lock.

COMPATIBILITY: ALL FRAMED PANELS



NEUTRAL

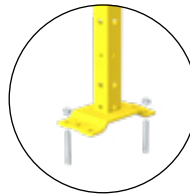
Lock-free system for optional fitting of accessories such as a safety push bar or safety electronic locks.

COMPATIBILITY: ALL FRAMED PANELS

BASE, TUBULAR AND FLOOR FITTING

WELDED BASE

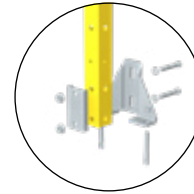
ADJUSTABLE BASE



40x40 2 M8 galvanized steel mechanic plugs

60x60 4 M8 galvanized steel mechanic plugs

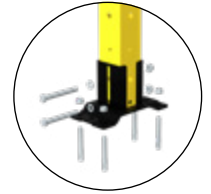
PLATE SIZE: 192x100mm



40x40 2 M8 galvanized steel mechanic plugs

Height setting 18mm

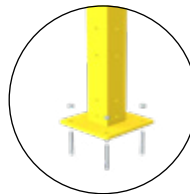
PLATE SIZE: 35x155mm



60x60 4 M8 galvanized steel mechanic plugs

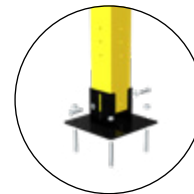
Height setting 25mm

PLATE SIZE: 192x100mm



80x80 4 M8 galvanized steel mechanic plugs

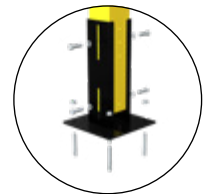
PLATE SIZE: 200x200mm



80x80 4 M8 galvanized steel mechanic plugs

Height setting 25mm

PLATE SIZE: 200x200mm



80x80 4 M8 galvanized steel mechanic plugs

Height setting 40mm

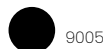
PLATE SIZE: 200x200mm

COMPATIBILITY

Doors are compatible with guard systems built with framed panels and META or VITERIA posts

COLOURS (RAL)

All doors undergo epoxy coating process.



9005



1018



7035

Other colours upon request.

VFDA. S S **1A** **0** **A** **R** **2** **.01** **2020**

①	OPENING
1A	Single opening

②	LOCK
N	Latch
G	Gamma
0	Neutral housing

③	TUBULAR SECTION AND POST BASE
A	40x40 post with adjustable base
B	40x40 post with welded base
C	60x60 post with adjustable base
D	60x60 post with welded base
E	80x80 post with high adjustable base
F	80x80 post with low adjustable base
G	80x80 post with welded base

④	PANEL COMPATIBILITY
R	Mesh panel
C	Closed panel
0	No need to identify

⑤	FRAME (mm)
2	20x20
3	30x30

⑥	OPENING WIDTH
01	From 600 a 750mm
02	From 755 a 950mm
03	From 955 a 1150mm
04	From 1155 a 1450mm
05	From 1455 a 1750mm
06	From 1755 a 1950mm
07	From 1955 a 2350mm
08	From 2355 a 2650mm
09	From 2655 a 2950mm

⑦	HEIGHT (mm)
2020 2320 2520	