

POSTS

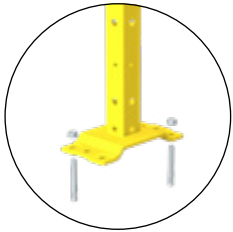
VITERIA

VITERIA posts provide a fast panel-to-post fixing system by means of a captive screw. This system has been developed in conformity with UNI EN ISO 14120, EN 12100 and Machinery Directive 2006/42/CE.

BASE, TUBULAR AND FLOOR FITTING

WELDED BASE

ADJUSTABLE BASE

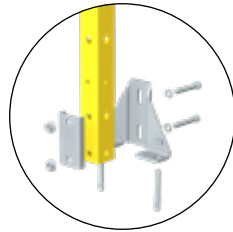


40x40 2 M8 galvanized steel mechanic plugs

60x60 4 M8 galvanized steel mechanic plugs

PLATE SIZE: 192x100mm

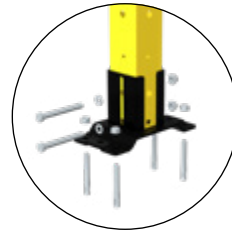
"Shock absorber" function resistance up to 2000N, high resistance central ribbed profile.



40x40 2 M8 galvanized steel mechanic plugs

Height adjusting 18mm

PLATE SIZE: 35x155mm

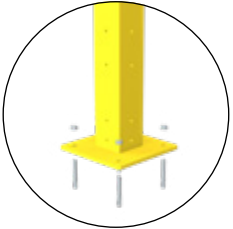


60x60 4 M8 galvanized steel mechanic plugs

Height adjusting 25mm

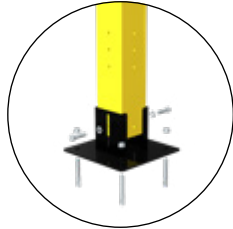
PLATE SIZE: 192x100 mm

"Shock absorber" function resistance up to 2000N, high resistance central ribbed profile.



80x80 4 M8 galvanized steel mechanic plugs

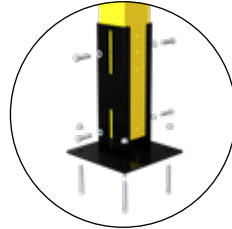
PLATE SIZE: 200x200mm



80x80 4 M8 galvanized steel mechanic plugs

Height adjusting 25mm

PLATE SIZE: 200x200mm



80x80 4 M8 galvanized steel mechanic plugs

Height adjusting 40mm

PLATE SIZE: 200x200mm

COMPATIBILITY

All framed panels

COLOURS (RAL)

All doors undergo epoxu coating process

● 9005

● 1018

● 7035

Other colours upon request.

(mm)

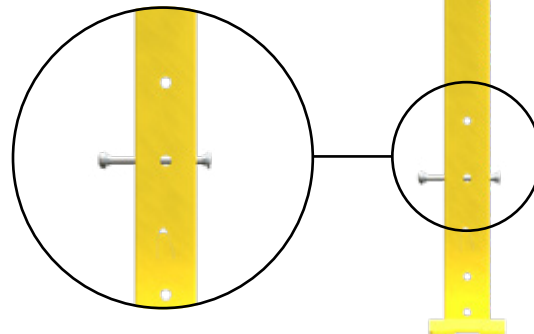
2520
(only 60x60mm or 80x80mm section)

2320

2020

1620

1080 *



* For guards at a height lower than 1400 mm, extra safety measures apply as required by UNI EN ISO 13857 standard.

CODE STRUCTURE

VFMA. ^①**V2** ^②**40** ^③**SD** U. ^④**1080**

①	MONTANTE	
V2	VITERIA with panel frame 20	
V3	VITERIA with panel frame 30	

②	TUBULAR SECTION (mm)	
40	40x40	
60	60x60	
80	80x80	

③	BASE	
SD	Welded base for 40x40 or 60x60 posts	
RS	Adjustable base for 40x40 posts	
RD	Adjustable base for 60x60 posts	
RB	Low adjustable base for 80x80 posts	
RA	High adjustable base for 80x80 posts	
SP	Welded base for 80x80 posts	

④	HEIGHT (mm)	
	1080 1620 2020 2320 2520	

ISO 14120
Self-certification

ISO 3834-3
Welding 3834-3 ICIM : 3834-100009-00

Impact test
UNI EN ISO 14120



Access Protection guards have passed the dynamic resistance test from impacts outside the danger area. Test was performed using the PENDULUM TEST procedure as required by **UNI EN ISO 14120** standard.