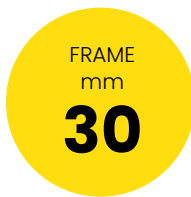
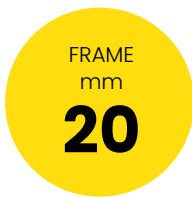


# COMPOSITE PANELS

## POLYLAM PLUS RANGE

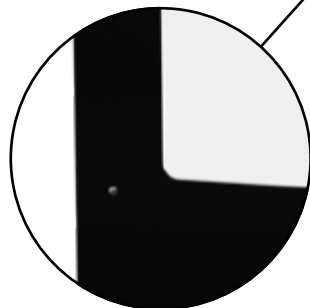
PolyLam Plus machinery safety guards are composed by 1mm laser-worked metal sheet for the lower part and 4mm polycarbonate for the upper part. Frames come in two sizes:



These guards are employed when the danger area is close and prevention from dust, sparks or liquid leaks is needed yet visibility within danger area is guaranteed. Distance from danger area can be as little as 0mm.

The panel is provided with a standard hole to house toughening captive fixing screws and other accessories.

METAL SHEET THICKNESS: 1mm  
POLYCARBONATE THICKNESS: 4mm



400 700 800 1000 1200 1500 (mm)



### COMPATIBILITY

Panel fixing system - META posts and VITERIA posts

### COLOURS (RAL)

Panels undergo epoxy coating



Other colours upon request

## CODE STRUCTURE

VFPA. <sup>①</sup> **PLP** <sup>②</sup> **4** <sup>③</sup> **20** <sup>④</sup> **.0400** <sup>⑤</sup> **1900**

<b>①</b>	<b>PANEL</b>	<b>PLP</b>   PolyLam Plus Range
<b>②</b>	<b>POLYCARBONATE THICKNESS</b>	<b>4</b>   4mm
<b>③</b>	<b>FRAME SECTION (mm)</b>	<b>20</b>   20x20 <b>30</b>   30x30
<b>④</b>	<b>BASE (mm)</b>	400   700   800   1000   1200   1500
<b>⑤</b>	<b>HEIGHT (mm)</b>	1900   2200   2400

### ISO 14120

Statement of conformity TÜV Nord : DM - 124554-17  
in combination with META posts

Self-certification  
in combination with VITERIA posts

### ISO 3834-3

Welding 3834-3 ICIM : 3834-100009-00

### Impact test UNI EN ISO 14120



**Access Protection guards** have passed the dynamic resistance test from impacts outside the danger area. Test was performed using the PENDULUM TEST procedure as required by **UNI EN ISO 14120** standard.