

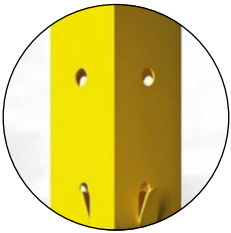
POSTS

MODULA

Modula posts provide a post-to-panel fixing system with a plate and captive screw. This system is manufactured in conformity with UNI EN ISO 14120, EN 12100 standards, Machinery Directive 2006/42/CE. The post is fitted with a hook system called Close up which facilitates assembly and standard holes to fix panels and other accessories.

HOOK SYSTEM

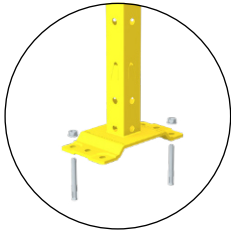
CLOSE UP



BASE, TUBULAR AND FLOOR FIXTURES

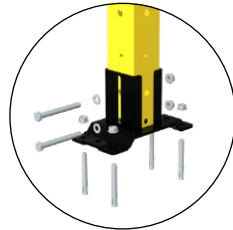
WELDED BASE

ADJUSTABLE BASE



60x60 4 mechanic zinc coated M8 steel dowels

PLATE SIZE: 192x100mm



60x60 4 mechanic zinc coated M8 steel dowels

Height setting: up to 25mm

PLATE SIZE: 192x100mm

COMPATIBILITY

MODULA panels

COLOURS (RAL)

All posts undergo epoxy coating process

● 9005

● 1018

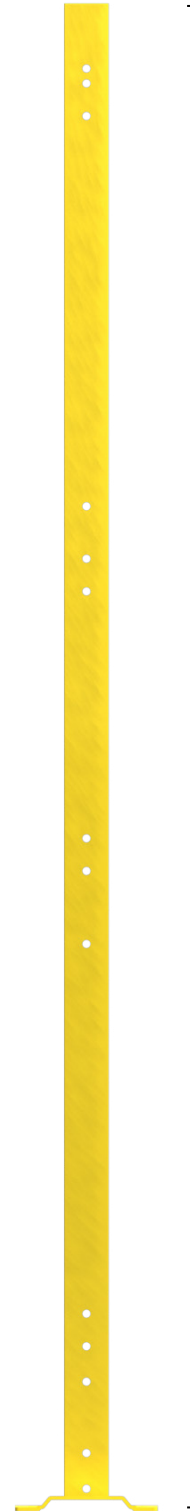
● 7035

Other colours upon request

(mm)

2493

2028



CODE STRUCTURE

VLMA. ^①**MO** ^②**60** ^③**SD** U. ^④**2028**

①	POST TYPE
MO	Modula
②	POST SIZE (mm)
60	60x60
③	BASE (mm)
SD	Welded base for 60x60 post
RD	Adjustable base for 60x60 post
④	HEIGHT (mm)
2028 2493	

ISO 14120

Self-certification

ISO 3834-3

Welding 3834-3 ICIM : 3834-100009-00

Impact test UNI EN ISO 14120



Accessafe Protection guards have passed the dynamic resistance test from impacts outside the danger area. Test was performed using the PENDULUM TEST procedure as required by UNI EN ISO 14120 standard.