

# POSTS

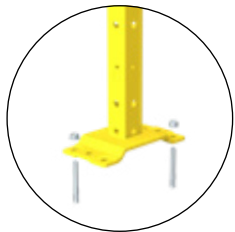
## VITERIA

VITERIA posts provide a fast panel-to-post fixing system by means of a captive screw. This system has been developed in conformity with UNI EN ISO 14120, EN 12100 and Machinery Directive 2006/42/CE.

### BASE, TUBULAR AND FLOOR FITTING

#### WELDED BASE

#### ADJUSTABLE BASE

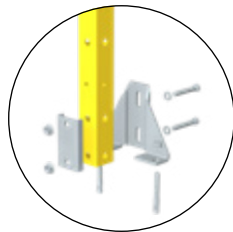


**40x40** 2 M8 galvanized steel mechanic plugs

**60x60** 4 M8 galvanized steel mechanic plugs

PLATE SIZE: 192x100mm

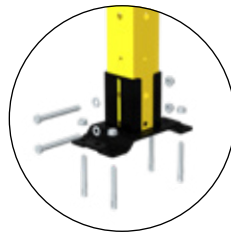
"Shock absorber" function resistance up to 2000N, high resistance central ribbed profile.



**40x40** 2 M8 galvanized steel mechanic plugs

Height adjusting 18mm

PLATE SIZE: 35x155mm

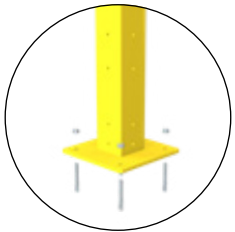


**60x60** 4 M8 galvanized steel mechanic plugs

Height adjusting 25mm

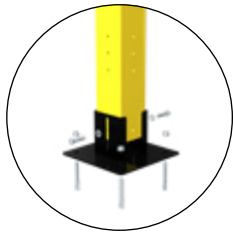
PLATE SIZE: 192x100 mm

"Shock absorber" function resistance up to 2000N, high resistance central ribbed profile.



**80x80** 4 M8 galvanized steel mechanic plugs

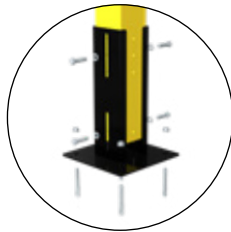
PLATE SIZE: 200x200mm



**80x80** 4 M8 galvanized steel mechanic plugs

Height adjusting 25mm

PLATE SIZE: 200x200mm



**80x80** 4 M8 galvanized steel mechanic plugs

Height adjusting 40mm

PLATE SIZE: 200x200mm

### COMPATIBILITY

All framed panels

### COLOURS (RAL)

All doors undergo epoxu coating process

9005

1018

7035

Other colours upon request.

(mm)

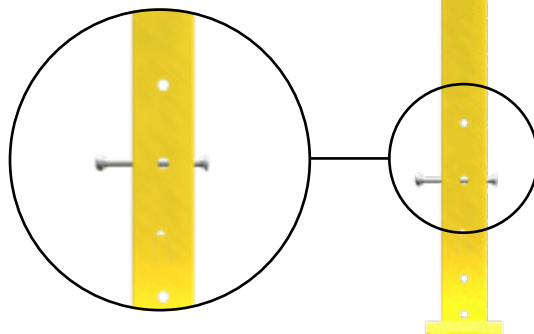
**2520**  
(only 60x60mm or 80x80mm section)

**2220**

**2020**

**1420**

**1080 \***



\* For guards at a height lower than 1400 mm, extra safety measures apply as required by UNI EN ISO 13857 standard.

## CODE STRUCTURE

VFMA. <sup>①</sup>**V2** <sup>②</sup>**40** <sup>③</sup>**SD** U. <sup>④</sup>**1080**

①	MONTANTE
<b>V2</b>	VITERIA with panel frame 20
<b>V3</b>	VITERIA with panel frame 30

②	TUBULAR SECTION (mm)
<b>40</b>	40x40
<b>60</b>	60x60
<b>80</b>	80x80

③	BASE
<b>SD</b>	Welded base for 40x40 or 60x60 posts
<b>RS</b>	Adjustable base for 40x40 posts
<b>RD</b>	Adjustable base for 60x60 posts
<b>RB</b>	Low adjustable base for 80x80 posts
<b>RA</b>	High adjustable base for 80x80 posts
<b>SP</b>	Welded base for 80x80 posts

④	HEIGHT (mm)
	1080   1420   2020   2220   2520

### ISO 14120

Self-certification

### ISO 3834-3

Welding 3834-3 ICIM : 3834-100009-00

#### Impact test UNI EN ISO 14120



Accessafe Protection guards have passed the dynamic resistance test from impacts outside the danger area. Test was performed using the PENDULUM TEST procedure as required by UNI EN ISO 14120 standard.