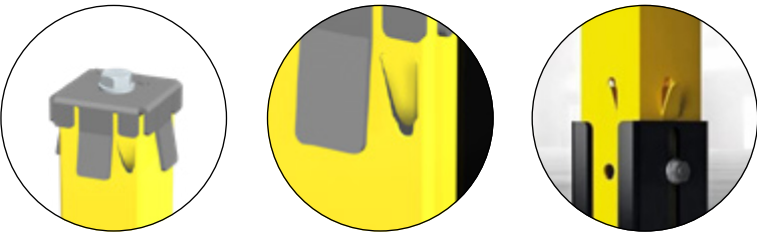


POSTS

META

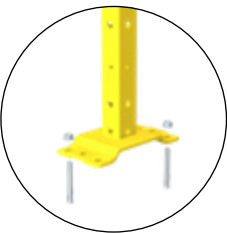
Meta posts provide a fast panel-to-post fixing system by means of a captive screw. This system has been developed in conformity with UNI EN ISO 14120, EN 12100 and Machinery Directive 2006/42/CE. The post has a zinc cap in the upper part and a lower wing laser-fixed to the tubular. The post has a standard hole for captive screw and other accessories fixing.

META FIXING SYSTEM EUROPEAN PATENT N° 2226451



BASE, TUBULAR AND FLOOR FITTING

WELDED BASE

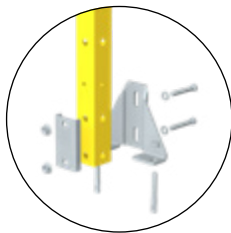


40x40 2 M8 galvanized steel mechanic plugs
60x60 4 M8 galvanized steel mechanic plugs

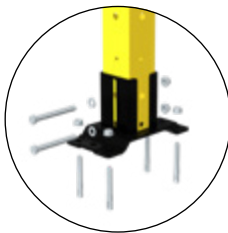
PLATE SIZE: 192x100mm

"Shock absorber" function resistance up to 2000N, high resistance central ribbed profile.

ADJUSTABLE BASE



40x40 2 M8 galvanized steel mechanic plugs
Height adjusting 18mm
PLATE SIZE: 35x155mm



60x60 4 M8 galvanized steel mechanic plugs
Height adjusting 25mm
PLATE SIZE: 192x100 mm

"Shock absorber" function resistance up to 2000N, high resistance central ribbed profile.

COMPATIBILITY

All framed panels

COLOURS (RAL)

All doors undergo epoxu coating process

- 9005
- 1018
- 7035

Other colours upon request.

(mm)

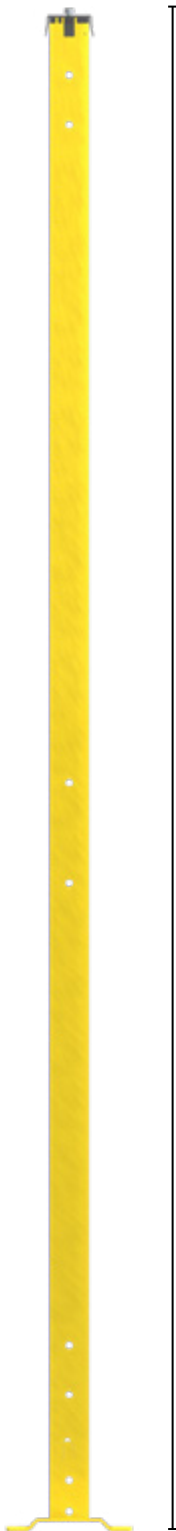
2520
(only 60x60mm section)

2220

2020

1420

1080 *



* For guards at a height lower than 1400 mm, extra safety measures apply as required by UNI EN ISO 13857 standard.

CODE STRUCTURE

VFMA. ^① **ME** ^② **40** ^③ **SD** U. ^④ **1080**

① POST	
ME	Meta
② TUBULAR SECTION (mm)	
40	40x40
60	60x60
③ BASE	
SD	Welded base for 40x40 or 60x60 posts
RS	Adjustable base for 40x40 posts
RD	Adjustable base for 60x60 posts
④ HEIGHT (mm)	
1080 1420 2020 2220 2520	

ISO 14120

Statement of conformity TÜV Nord : DM - 124554-17

ISO 3834-3

Welding 3834-3 ICIM : 3834-100009-00

Impact test UNI EN ISO 14120



Accessafe Protection guards have passed the dynamic resistance test from impacts outside the danger area. Test was performed using the PENDULUM TEST procedure as required by UNI EN ISO 14120 standard.