

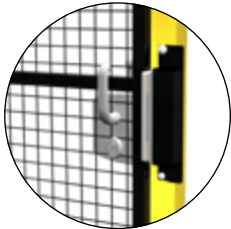
# SLIDING DOOR

## BOTTOM TRACK SINGLE OPENING

The bottom track single opening sliding door, featuring a zinc stainless steel rail with omega profile and fixed to the floor with special plugs, with ogives which get the door to slide, can be built using any of Accessafe framed panels. The door can be ordered as Door in a Box to be assembled on-site. Accessories and posts for assembly are supplied whereas the door panels need to be purchased separately in T30 version. All doors are provided with floor fixing plugs and captive bolts as per UNI EN ISO14120



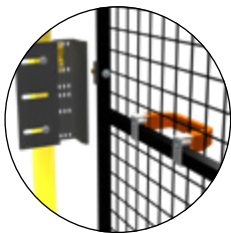
### LOCKS



#### GAMMA

High quality lock with aluminum housing and stainless steel mechanism. It is supplied with a set of 2 anodized aluminum handles. Key lock is available upon request.

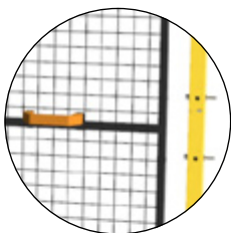
COMPATIBILITY: DEDICATED PANELS IN 30mm TUBULAR



#### LATCH

Brass mechanic groove and tongue lock.

COMPATIBILITY: ALL FRAMED PANELS



#### NEUTRAL

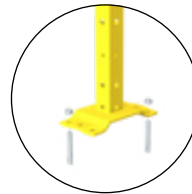
Lock-free system for optional fitting of accessories such as a safety push bar or safety electronic locks.

COMPATIBILITY: ALL FRAMED PANELS

### BASE, TUBULAR AND FLOOR FITTING

#### WELDED BASE

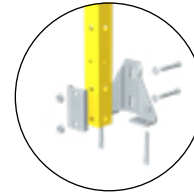
#### ADJUSTABLE BASE



**40x40** 2 M8 galvanized steel mechanic plugs

**60x60** 4 M8 galvanized steel mechanic plugs

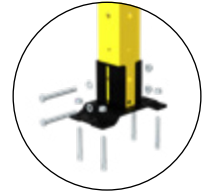
PLATE SIZE: 192x100mm



**40x40** 2 M8 galvanized steel mechanic plugs

Height setting 18mm

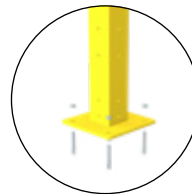
PLATE SIZE: 35x155mm



**60x60** 4 M8 galvanized steel mechanic plugs

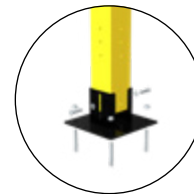
Height setting 25mm

PLATE SIZE: 192x100mm



**80x80** 4 M8 galvanized steel mechanic plugs

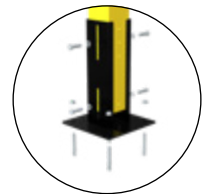
PLATE SIZE: 200x200mm



**80x80** 4 M8 galvanized steel mechanic plugs

Height setting 25mm

PLATE SIZE: 200x200mm



**80x80** 4 M8 galvanized steel mechanic plugs

Height setting 40mm

PLATE SIZE: 200x200mm

### COMPATIBILITY

Doors are compatible with guard systems built with framed panels and META or VITERIA posts

### COLOURS (RAL)

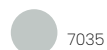
All doors undergo epoxy coating process.



9005



1018



7035

Other colours upon request.

## CODE STRUCTURE

VFDA. S I **1A** **0** **A** **R** **2** **.01** **2020**

①	OPENING
1A	Single opening

②	LOCK
N	Latch
G	Gamma
0	Neutral housing

③	TUBULAR SECTION AND POST BASE
A	40x40 post with adjustable base
B	40x40 post with welded base
C	60x60 post with adjustable base
D	60x60 post with welded base
E	80x80 post with high adjustable base
F	80x80 post with low adjustable base
G	80x80 post with welded base

④	PANEL COMPATIBILITY
R	Mesh panel
C	Closed panel
0	No need to identify

⑤	FRAME (mm)
2	20x20
3	30x30

⑥	OPENING WIDTH
01	From 600 to 700mm
02	From 705 to 900mm
03	From 905 to 1100mm
04	From 1105 to 1400mm
05	From 1405 to 1500mm
06	From 1505 to 1700mm
07	From 1705 to 1900mm

⑦	HEIGHT (mm)
1080   1420   2020   2220   2520	