

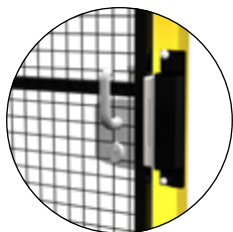
SLIDING DOOR

ROLLER BEARINGS AND WHEELS SINGLE OPENING

The single opening roller bearings and wheels sliding door, featuring ogives which get the door to slide, can be built using any of Accesssafe framed panels. The door can be ordered as Door in a Box to be assembled on-site. Accessories and posts for assembly are supplied whereas the door panels need to be purchased separately in T30 version. All doors are provided with floor fixing plugs and captive bolts as per UNI EN ISO14120.



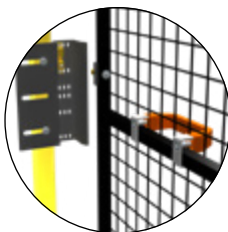
LOCKS



GAMMA

High quality lock with aluminum housing and stainless steel mechanism. It is supplied with a set of 2 anodized aluminum handles. Key lock is available upon request.

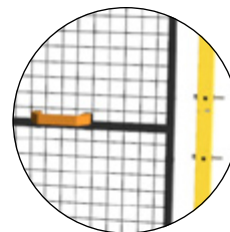
COMPATIBILITY: DEDICATED PANELS IN 30mm TUBULAR



LATCH

Brass mechanic groove and tongue lock.

COMPATIBILITY: ALL FRAMED PANELS



NEUTRAL

Lock-free system for optional fitting of accessories such as a safety push bar or safety electronic locks.

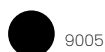
COMPATIBILITY: ALL FRAMED PANELS

COMPATIBILITY

Doors are compatible with guard systems built with framed panels and META or VITERIA posts

COLOURS (RAL)

All doors undergo epoxy coating process.



9005



1018

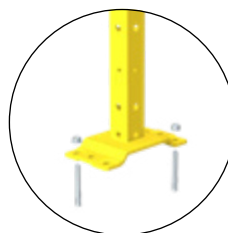


7035

Other colours upon request.

BASE, TUBULAR AND FLOOR FITTING

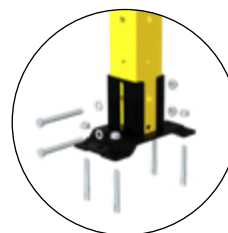
WELDED BASE



60x60 4 M8 galvanized steel mechanic plugs

PLATE SIZE: 192x100mm

ADJUSTABLE BASE



60x60 4 M8 galvanized steel mechanic plugs

Height setting 25mm

PLATE SIZE: 192x100mm

CODE STRUCTURE

VFDA. S C ^①1A ^②0 ^③A ^④R ^⑤3 ^⑥.01 ^⑦2020

1	OPENING	
1A	Single opening	

2	LOCK	
N	Latch	
G	Gamma	
0	Neutral housing	

3	TUBULAR SECTION AND POST BASE	
C	60x60 post with adjustable base	
D	60x60 post with welded base	

4	PANEL COMPATIBILITY	
R	Mesh panel	
C	Closed panel	
0	No need to identify	

5	FRAME (mm)	
3	30x30	

6	OPENING WIDTH	
01	From 1000 to 1100mm	
02	From 1105 to 1200mm	
03	From 1205 to 1300mm	
04	From 1305 to 1400mm	
05	From 1405 to 1500mm	
06	From 1505 to 1600mm	
07	From 1605 to 1800mm	
08	From 1805 to 2000mm	
09	From 2005 to 2100mm	
10	From 2105 to 2300mm	
11	From 2305 to 2500mm	

7	HEIGHT (mm)	
1080 1420 2020 2220 2520		